



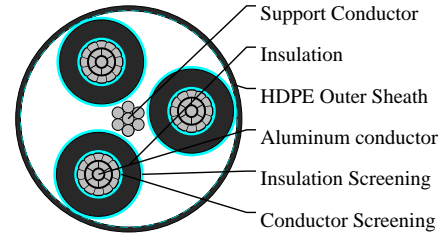
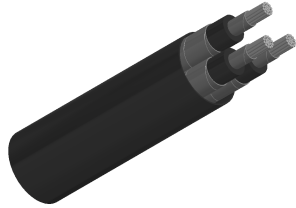
# Caledonian

Aluminium Conductor Cables

www.caledonian-cables.com

marketing@caledonian-cables.com

## 12.7/22kV Non Screened ABC –Aerial Bundled Cables to AS/NZS 3599.1(AL/XLPE/HDPE) 3C70



### APPLICATIONS

Three XLPE insulated cores are bundled around the AAAC/1120 support conductor in a right hand lay.

### STANDARDS

AS/NZS 3599.1

### CABLE CONSTRUCTION

Phase Conductor: Circular compacted stranded H68 aluminium to BS2627.

Conductor Screen: Extruded semi-conductive layer.

Insulation: XLPE.

Insulation Screen: Extruded semi-conductive layer.

Outer Sheath: HDPE.

Support Conductor: Aluminium alloy conductor (AAAC/1120).

Assembly: Three XLPE insulated cores are bundled around the AAAC/1120 support conductor in a right hand lay.

### DIMENSION AND PARAMETERS

| No. of Cores × Cross-sectional Area | Conductor Diameter | Nominal Insulation Thickness | Nominal Insulation Screen Thickness | Nominal Sheath Thickness | Approx. Overall Diameter | Cable Weight | AAAC/1120 Support Conductor Size | Continuous Current Rating (Still air) | Continuous Current Rating (1m/s wind) | Continuous Current Rating (2m/s wind) |
|-------------------------------------|--------------------|------------------------------|-------------------------------------|--------------------------|--------------------------|--------------|----------------------------------|---------------------------------------|---------------------------------------|---------------------------------------|
| No. × mm <sup>2</sup>               | mm                 | mm                           | mm                                  | mm                       | mm                       | kg/km        | no./mm                           | A                                     | A                                     | A                                     |
| 3x70                                | 9.7                | 5.5                          | 0.8                                 | 1.2                      | 66.5                     | 2260         | 7/4.75                           | 160                                   | 230                                   | 275                                   |